

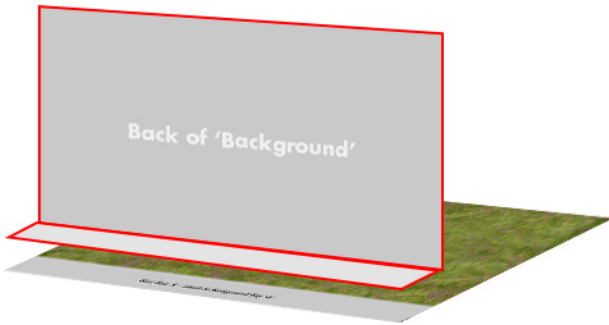
Disney · PIXAR
**THE GOOD
DINOSAUR**

IN THEATERS NOVEMBER 25

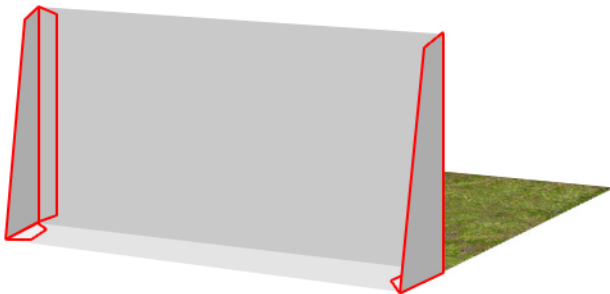
MAKE YOUR OWN DINO-RAMA

Scene:

Cut out the floor, background and 2 supports. On the background piece, fold flap 'A' back and stick it directly to flap 'B' on the ground piece...

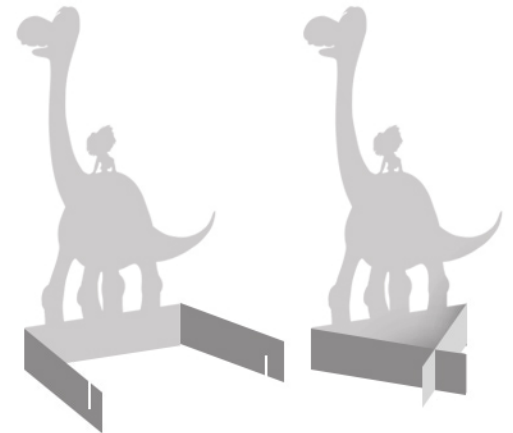


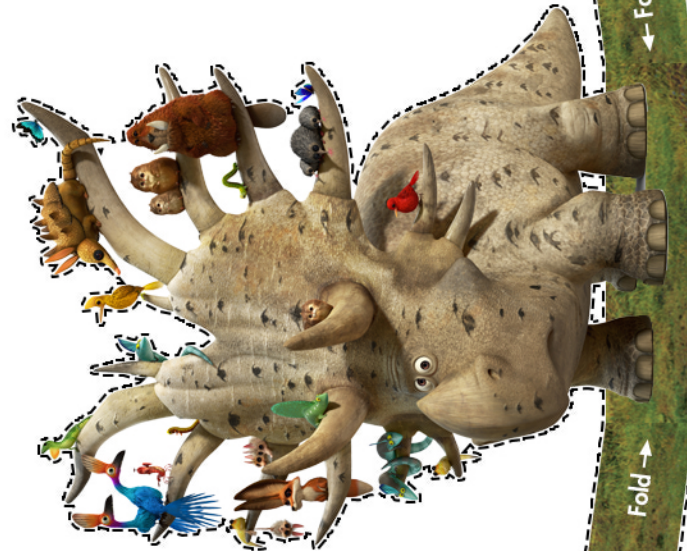
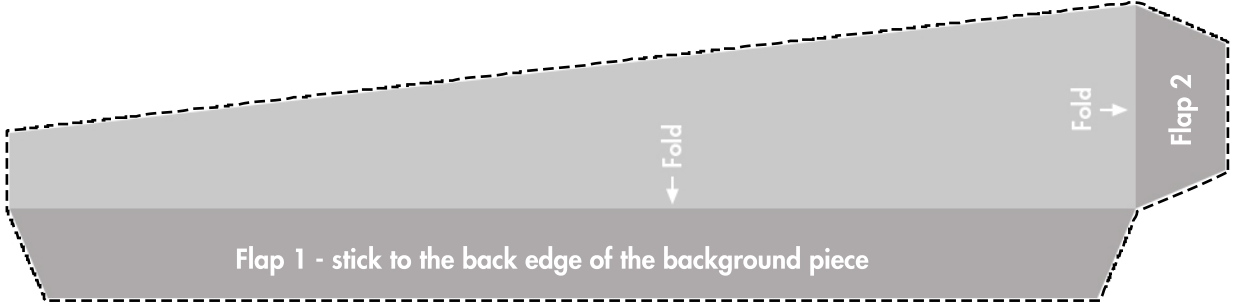
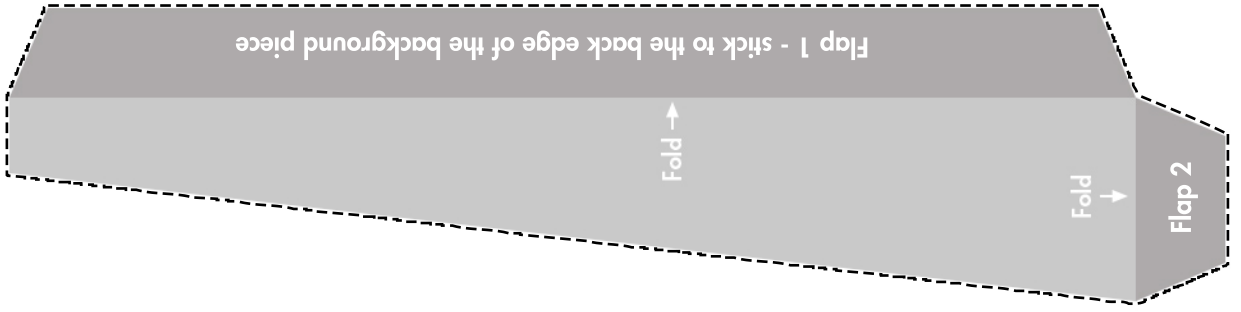
On the support pieces, fold the flaps back, sticking flap '1' directly to the background piece and flap '2' to the ground, thus creating supports for the background

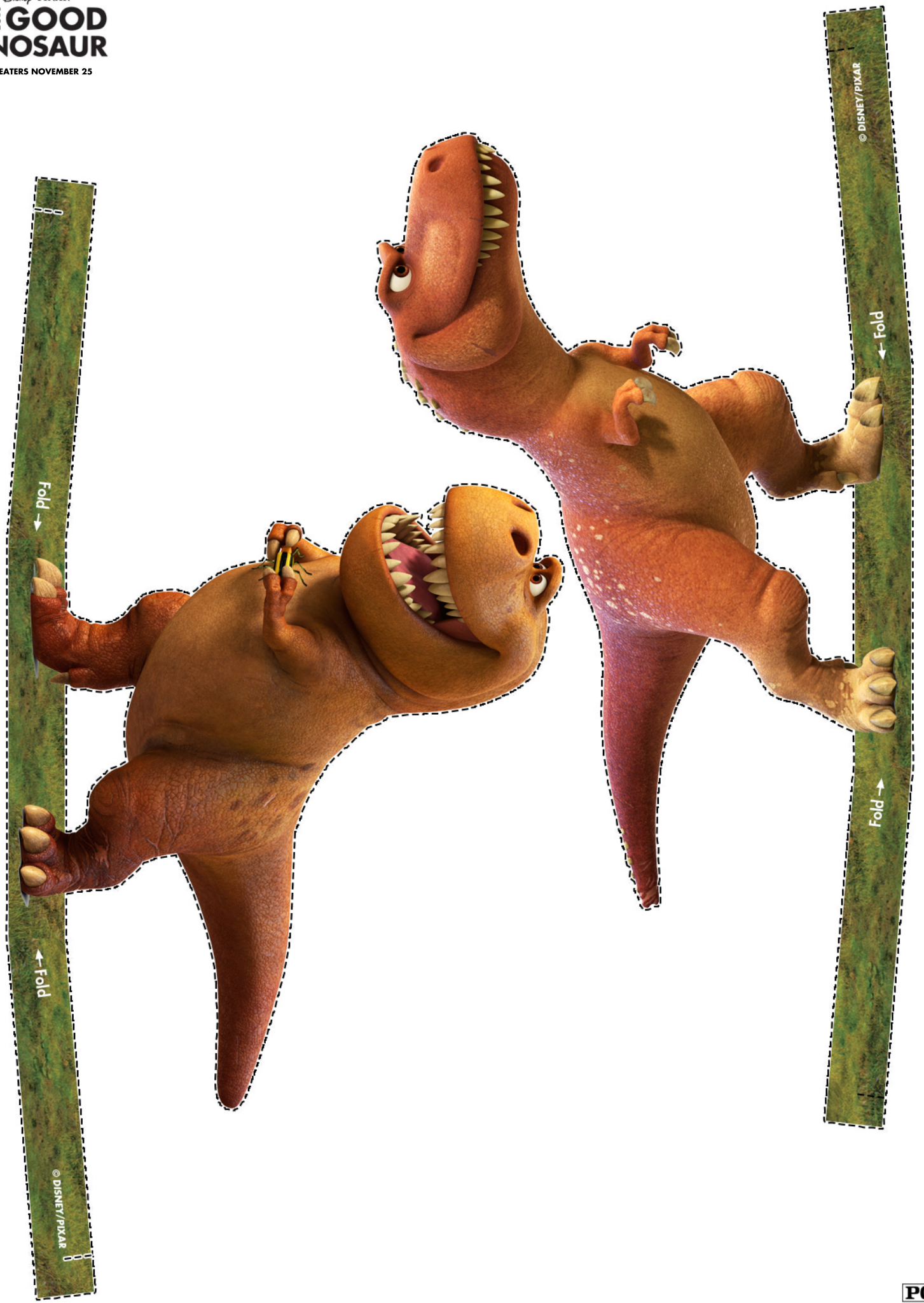


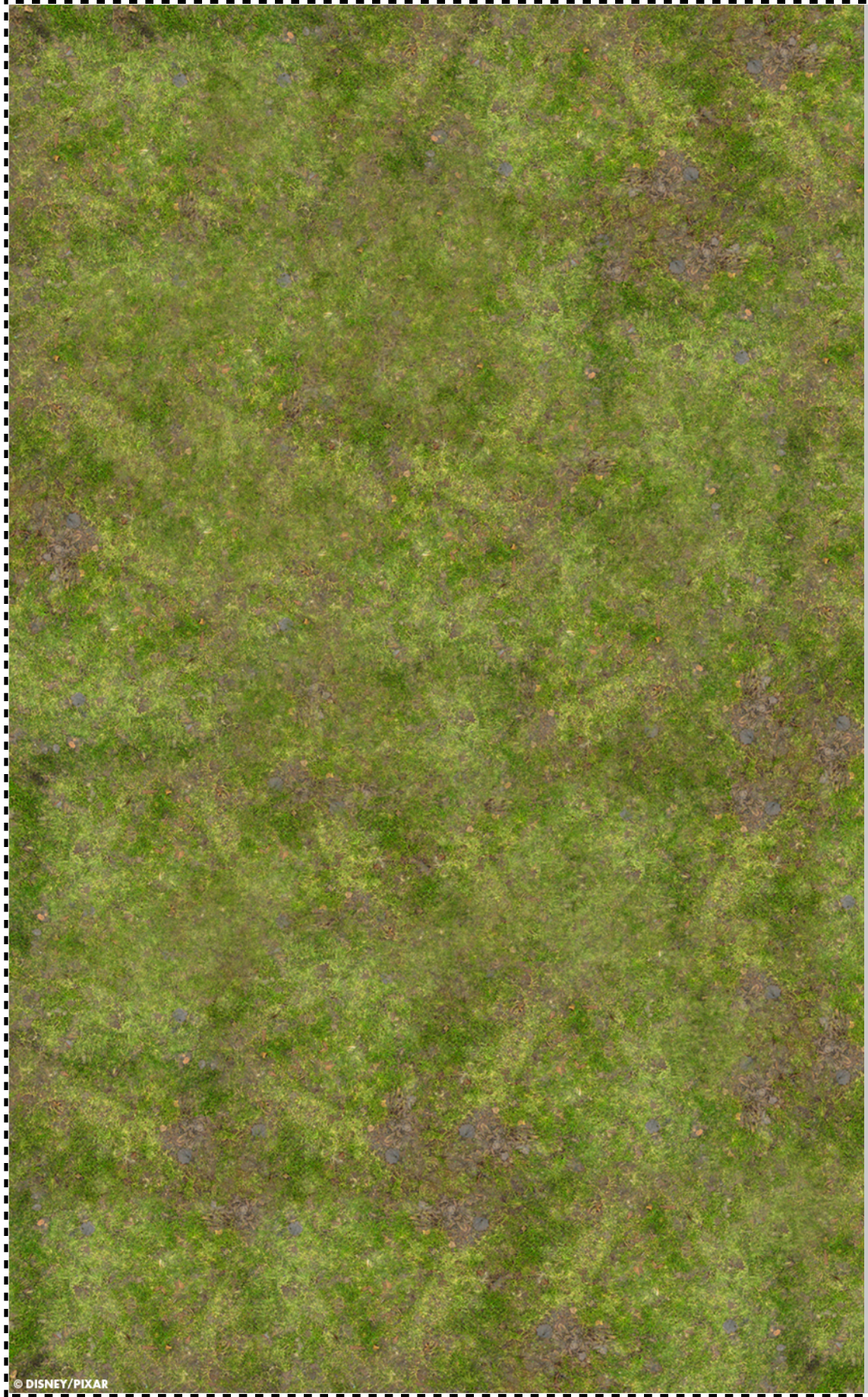
Dinosaurs:

Cut around the dotted lines to cut out each dinosaur. Then fold back either side of the base and slot the ends together to make a stand









Floor flap 'B' - attach to Background flap 'A'



© DISNEY/PIXAR

↑ Fold

↑ Fold

Background flap 'A' - attached to floor flap 'B'

